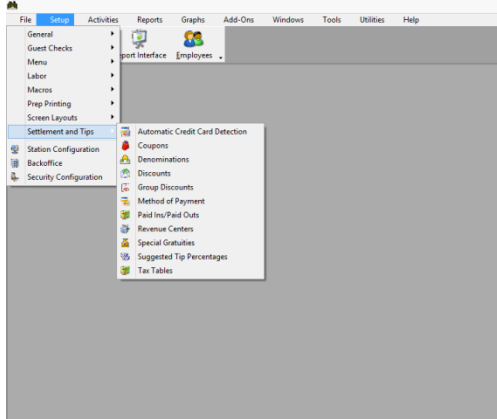
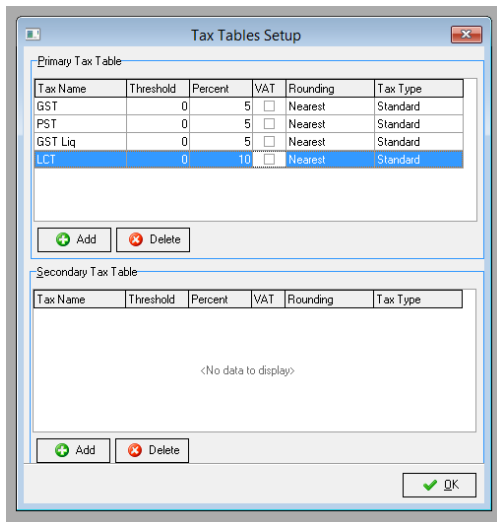


Restaurant Manager Tax Rate Change

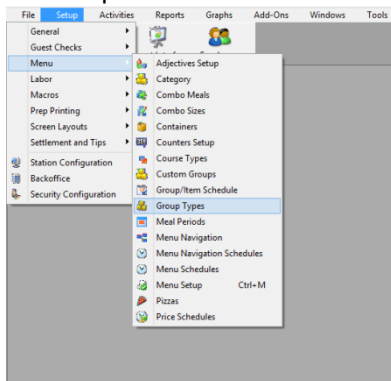
1. Enter the RM Backoffice Program (RMWin.exe)
2. Select Tax Tables under Setup>Settlement & Tips> Tax Tables.



3. Under Tax Tables find PST and increase to 6%



4. To Expand onto new items such as food, snacks and beverages go to Setup>Menu>Group Types



5. In Group Types select the group you want to add PST to and check PST

